

Eglinton-Scarborough Crosstown Update Community Meeting April 26 2011

Karen Stintz, Councillor Ward 16
Chair, Toronto Transit Commission



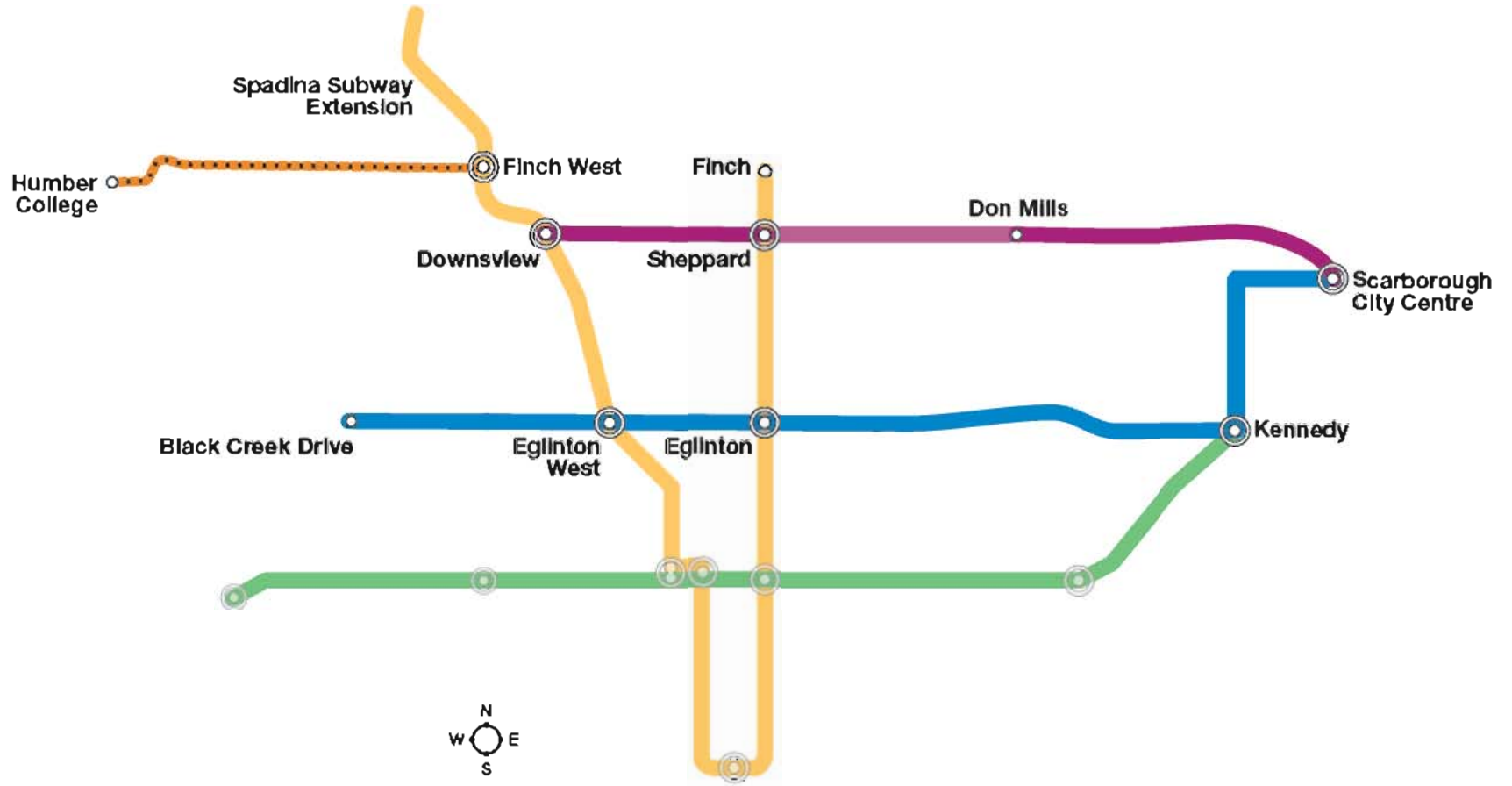
Eglinton-Scarborough Crosstown Community Meeting Agenda

- Introduction
- Eglinton-Scarborough Crosstown Project Status Presentation
- Councillors Remarks
- Questions and Answers
- Wrap Up

New Transit Plan For Toronto

- New Transit Plan Announced by Mayor Ford, Premier McGuinty and Minister Wynne on March 31, 2011
- Plan will improve mobility in Toronto
- Enhance economic, social and environmental well being
- Accommodate new growth

TORONTO TRANSIT PLAN



Sheppard Subway
 - Downsview to Yonge
 - Don Mills to Scarborough City Centre

Eglinton-Scarborough Crosstown
 - LRT Underground: Black Creek Drive to Kennedy
 - LRT Elevated: Kennedy to Scarborough City Centre

Finch - Enhanced bus service
 - Yonge to Humber College

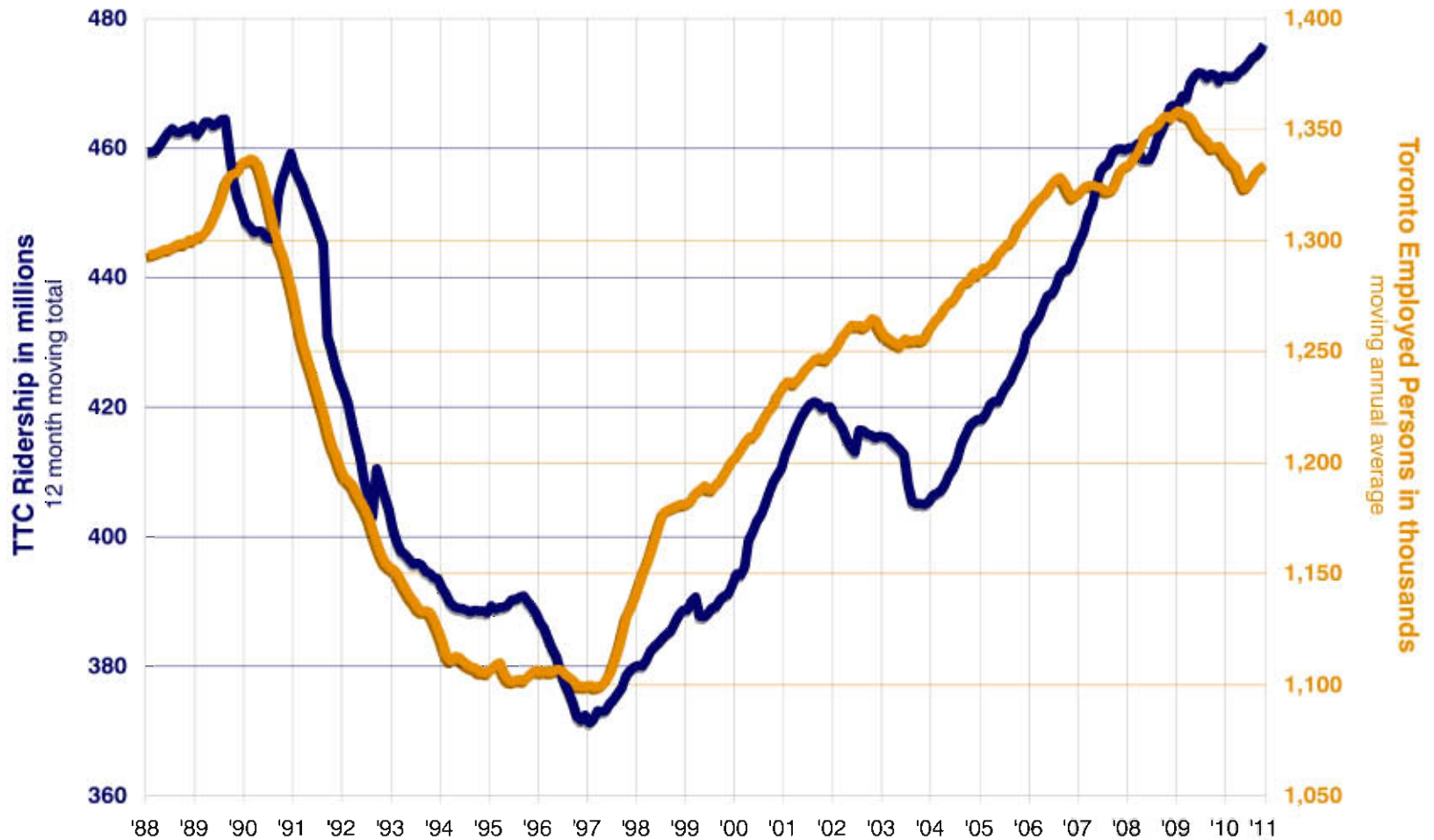
○ Station

⊙ Interchange



TTC System Ridership vs Toronto Employment

1988 to 2010



TTC SP 01-12 2010 DRG. No. 12108

Eglinton and Scarborough Today

Eglinton 32 and 34 bus routes - 66,000 combined daily weekday riders

Scarborough RT route - 45,000 daily weekday riders



Eglinton-Scarborough Crosstown

- Funded by the Province through Metrolinx
- Faster travel times (35 min from Kennedy to Jane)
- Through service from Scarborough Centre to Jane (45 min)
- Increase SRT capacity with new and larger light rail vehicles
- Connections east to west across the city
- Support to future growth across the city
- Thousands of jobs during construction
- Easy quick connections to the TTC subway system and GO Transit network
- Implements PRESTO transit fare card

Honourable Kathleen Wynne
Minister of Transportation



Eglinton - Scarborough Crosstown

Community Update

April 26, 2011

Jack Collins, Vice-President Rapid Transit Implementation, Metrolinx
Anna Pace, Director, Strategic Partnerships, Toronto Transit Commission

Outline

- Metrolinx Mandate and Responsibilities
Jack Collins, Metrolinx
- Overview of Project and Approvals
Jack Collins, Metrolinx
- Design and Construction Update
Anna Pace, TTC

Metrolinx

Created in 2006, Metrolinx provides residents and businesses in the GTHA with a transportation system that is modern, efficient and integrated.

As a provincial agency, Metrolinx was created to play a critical role in planning for a seamless, integrated transit network across the region. In 2009, GO Transit became a division of Metrolinx. The Air Rail Link is also a division of Metrolinx, and PRESTO will become a division of Metrolinx shortly.

Metrolinx

Our Mandate is to do three things:

- Deliver the best possible transportation services today while leading the way to an even better, more convenient service tomorrow.
- Make the best possible use of public transportation investment dollars.
- Measurably improve the quality of life in our region.

Key Responsibilities for Project

- Key Responsibilities:
 - Metrolinx is responsible for securing funding and environmental approvals, designing, coordinating, planning, constructing and implementing the Eglinton-Scarborough Crosstown LRT project. Metrolinx will own and control this project.
 - Metrolinx is contracting with the TTC to act as its agent in the delivery of the project

Eglinton-Scarborough Crosstown Plan

- Key facts:
 - 25 km east-west LRT corridor between Scarborough Centre and Jane Street / Black Creek
 - 19 km of tunnelled LRT along Eglinton connected with continuous through-running service along upgraded SRT alignment (6 km, elevated and at-grade, 0.5 km tunnelled) to Scarborough Centre
 - Up to 26 stations
 - Metrolinx cost estimate for the combined project is \$8.2B (2010\$)

Eglinton - Scarborough Crosstown



Status: Midtown Tunnel and SRT

Midtown Tunnel
– Approved EA

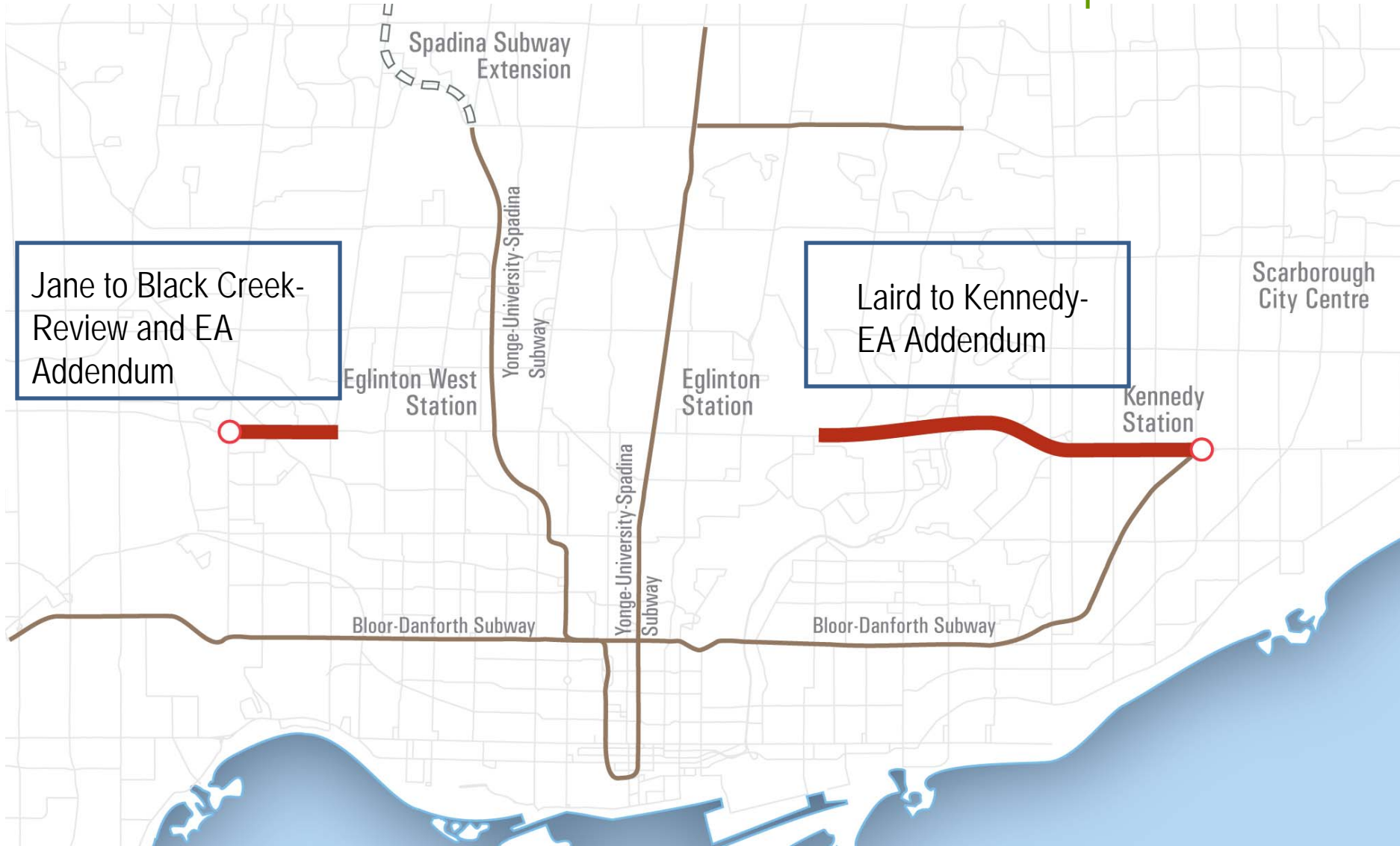
Elevated SRT
– Approved EA



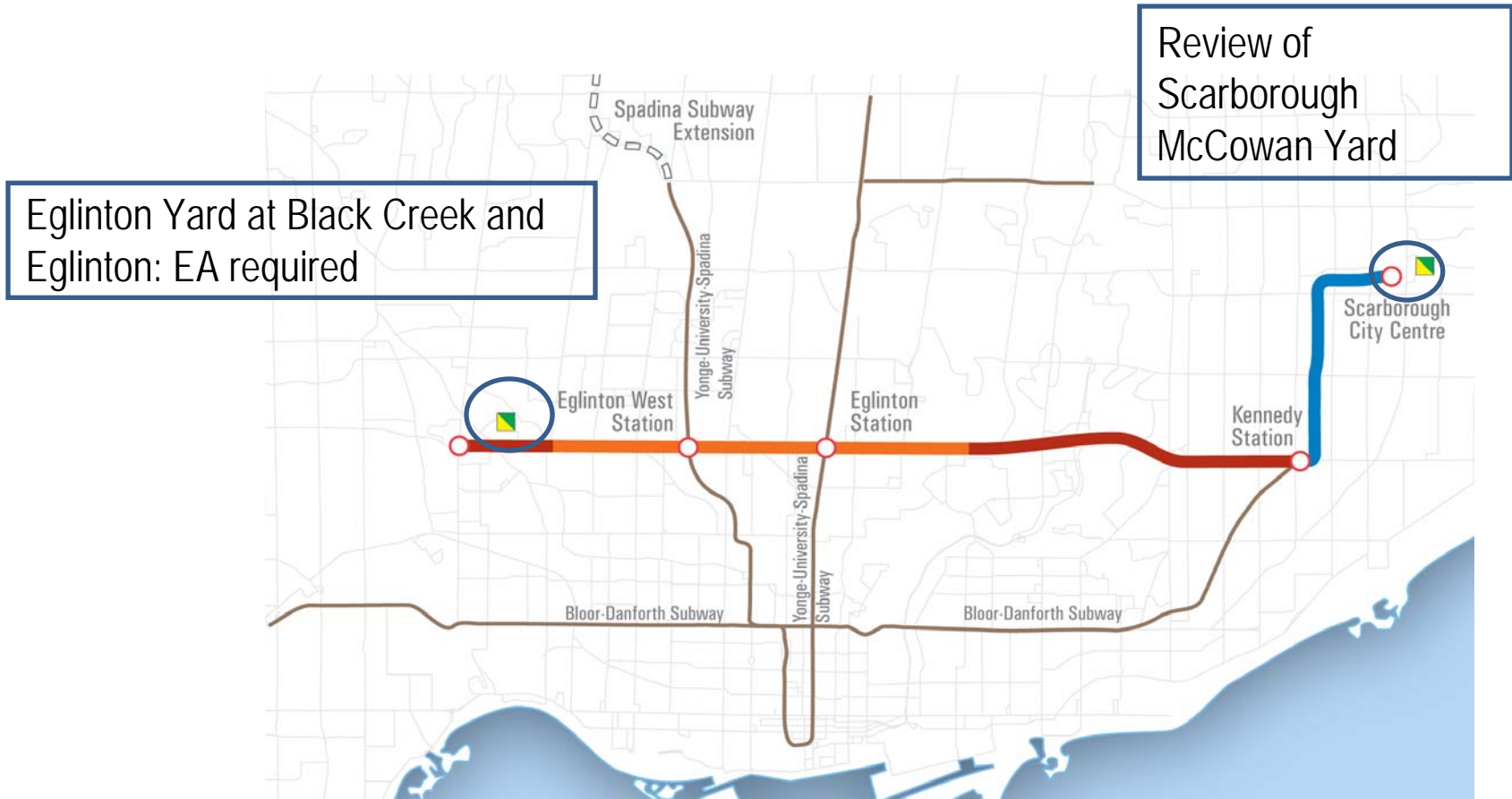
Status: Environmental Assessment Updates

- Conduct preliminary engineering review for Eglinton east and west tunnel segments
 - Station requirements and locations along Eglinton east
 - Kennedy Station configuration
 - McCowan layover yard re-configuration
 - Jane / Black Creek terminus alignment
 - Service plan concepts and modeling
- Public consultation
- Prepare for amendments / update to Environmental Assessment
- MOE approval

Status: Environmental Assessment Updates



Status: Maintenance and Storage Facilities



Eglinton-Scarborough Crosstown is Moving Forward

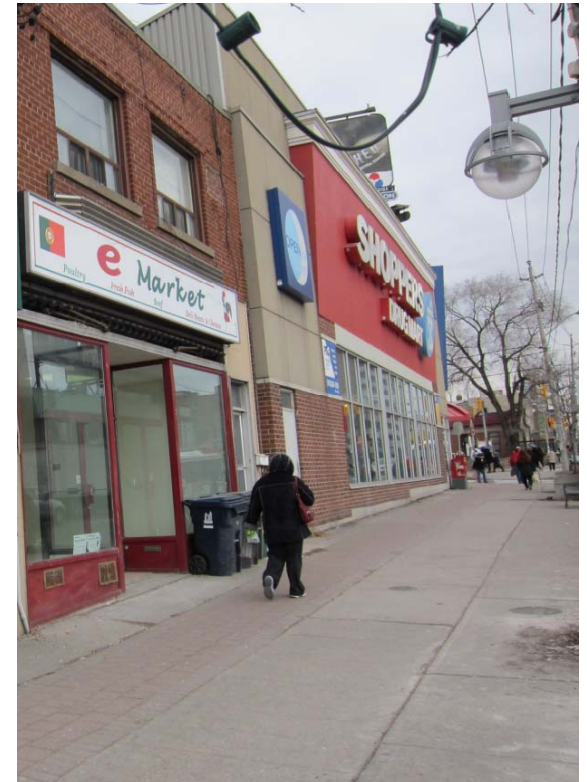
Design & Construction Progress

Anna Pace, Director, Strategic Partnerships, TTC



Working with the Community

- Key to the success - Community relations team working with communities, businesses and stakeholders
- Identify issues early and mitigate construction impacts.
- Community liaison staff will be on the ground, meeting face-to-face with community members
- Engage with community early and often, flag and address issues related to construction



Working with the Community

- Community Offices: visible on-street presence and access to updates and project information
- Working with project team and contractors to resolve issues
- Provide consistent, timely and accurate communication – print, website, signage, etc.
- Consultation and Outreach for each design and construction activity
- New dedicated website
- Prepare community for tunnelling and construction of stations
- Working with you to manage disruption

Working with the Community

- Work in partnership with local businesses to mitigate impacts of construction (e.g. “shop local” programs)
- Work with local community on safe pedestrian and commuter routes, where appropriate (e.g. “safe routes to school”)



Light Rail Vehicles



Light Rail Vehicles

New LRVs will be:

- Fully accessible
- Air conditioned
- Audio and visual passenger information

Design & Manufacture

- Bombardier Awarded Contract by Metrolinx in June 2010 for \$770 million
- TTC Vehicle Engineering staff are managing the contract
- Design to be complete by December 2011
- Manufactured in Thunder Bay

Potential Interior Layout



Construction Management Approach

Through centralized project management we plan to:

- Ensure scope defined before construction
- Pre-qualify contractors
- Define utility work before construction
- Ensure consistent and coordinated approach among contractors
- Include obligations for contractor support of community relations



Tunnel Boring Machines

- On July 28, 2010 Metrolinx ordered four tunnel boring machines at \$62 million
- Machines will commence midtown tunnel in mid-2012
- Manufactured by Lovat Inc., a Toronto company employs 380 people in Etobicoke
- Valiant Machine and Tool will manufacture electrical and mechanical trailing gear assemblies in Windsor
- A single machine's average mining rate for lined tunnel is 75 metres a week



Tunnel Liners

Concrete Tunnel Liners

- Metrolinx awarded contract in February 2011 to Munro Concrete Products Limited (Essa Township)
- Munro is adding in excess of 100 jobs and expanding their plant



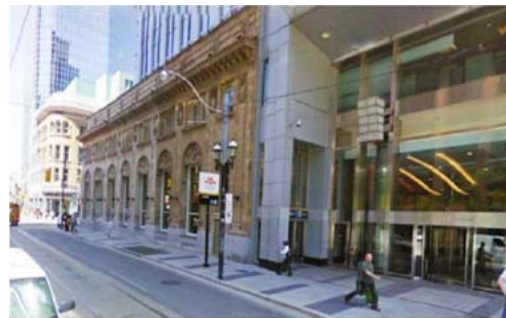
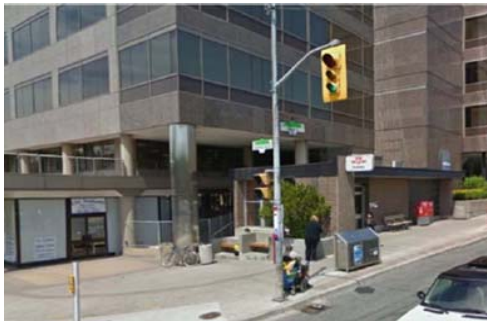
Station Design

Approach for Station Design:

- Enhance accessibility
- Minimize impact on adjacent areas
- Understand development potential
- Preserve opportunities for integration

Key Design Elements:

- Main entrance & secondary entrance
- Elevators and escalators
- Fare payment-PRESTO

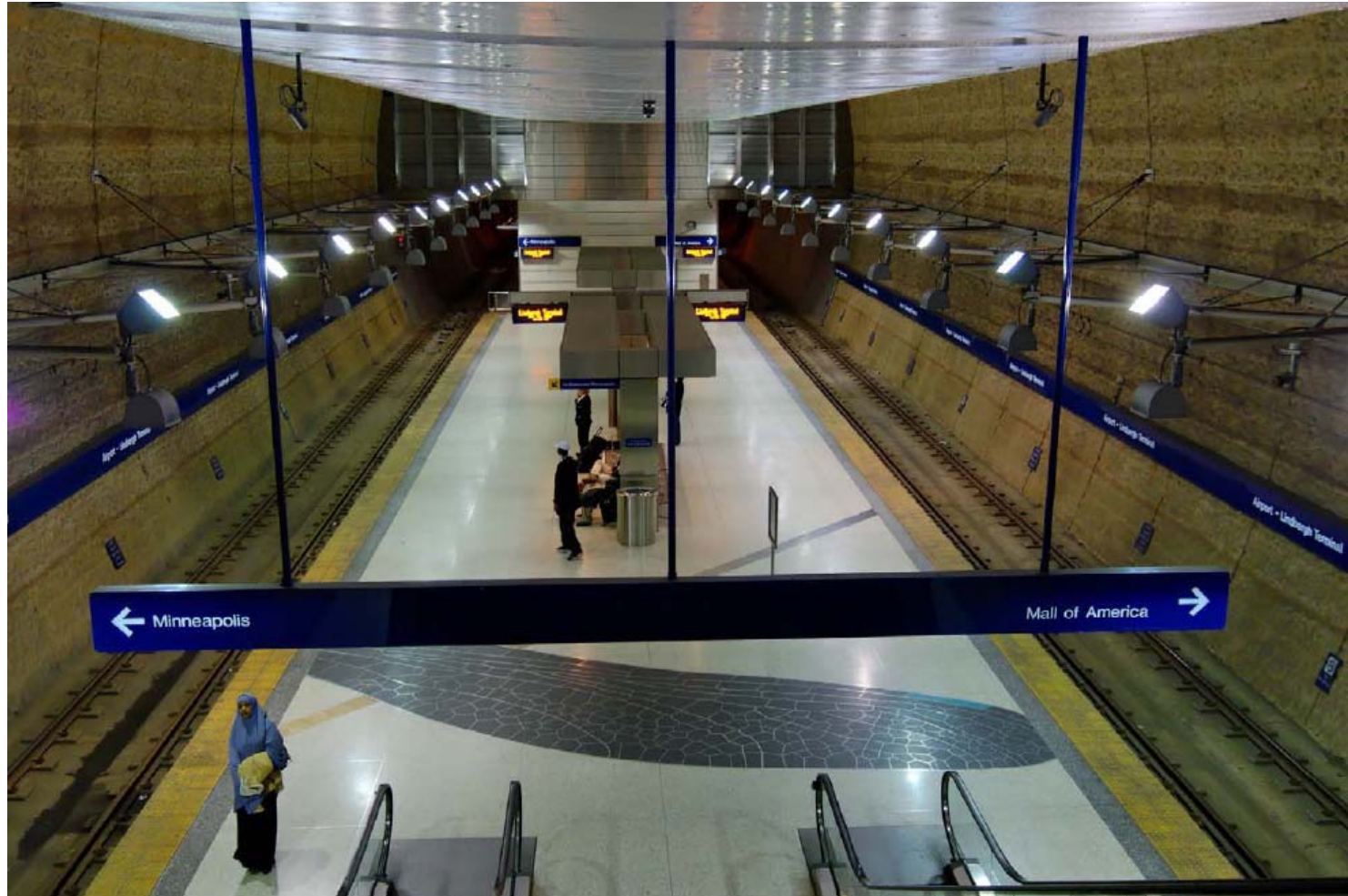


Station Design

- Minimize property and construction impacts
- Minimize disruption to extensive utilities around stations
- Accommodate local traffic during construction



Station Design



Sample underground LRT station in Minneapolis

Station Design

- Metrolinx Board recently approved station design preliminary engineering
- Design concepts being developed for 5 stations:
 - Eglinton West, Keele, Caledonia, Dufferin and Bathurst
- Public consultation and information during design process

Geotechnical

Summer 2010: midtown tunnel segment

- Phase One: Core sampling geotechnical soil testing: **COMPLETE**
- Utility Investigation: **ON-GOING**
- Pre-construction Investigations: **Early 2011**
- Phase Two: Core samples-geotechnical: **PENDING**

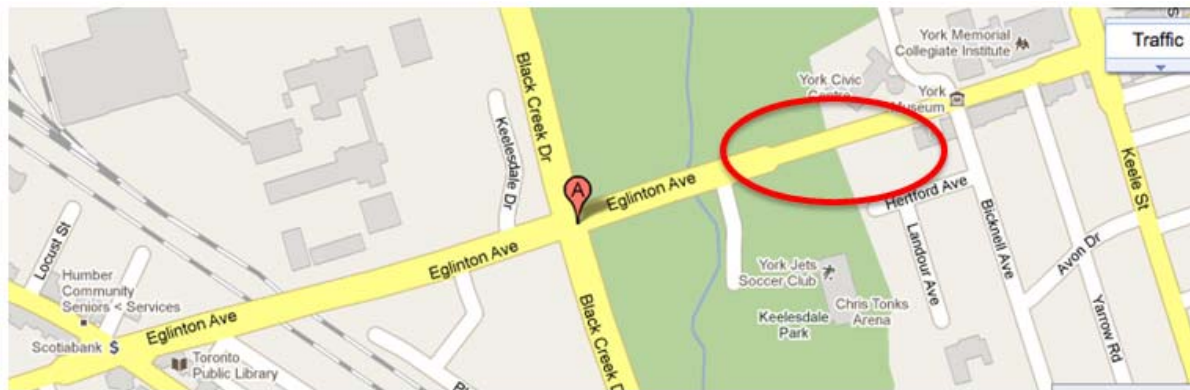


Construction Starts this Summer

- Final design underway for midtown tunnel section
- Bid for Black Creek Tunnel Launching shaft issued this week
- Black Creek Launching shaft construction starts this summer
- Tunnel construction to start mid 2012
- Development of construction staging plans and Project Implementation Plan

First Construction Contract

- Tunnel launch site at Black Creek scheduled to begin work in Summer 2011
- Tunnelling will start summer 2012 and head east
- Public Information with Community before construction starts



 West Launch Area



Thank you

